

Investment Decision Making Under Deep Uncertainty

Application to Climate Change

Stéphane Hallegatte

Ankur Shah

Robert Lempert

Casey Brown

Stuart Gill

The World Bank
Sustainable Development Network
Office of the Chief Economist
September 2012



Abstract

While agreeing on the choice of an optimal investment decision is already difficult for any diverse group of actors, priorities, and world views, the presence of deep uncertainties further challenges the decision-making framework by questioning the robustness of all purportedly optimal solutions.

This paper summarizes the additional uncertainty that is created by climate change, and reviews the tools that are available to project climate change (including downscaling techniques) and to assess and quantify the corresponding uncertainty.

Assuming that climate change and other deep uncertainties cannot be eliminated over the short term (and probably even over the longer term), it then summarizes existing decision-making methodologies that are able to deal with climate-related uncertainty, namely cost-benefit analysis under uncertainty, cost-

benefit analysis with real options, robust decision making, and climate informed decision analysis. It also provides examples of applications of these methodologies, highlighting their pros and cons and their domain of applicability. The paper concludes that it is impossible to define the “best” solution or to prescribe any particular methodology in general. Instead, a menu of methodologies is required, together with some indications on which strategies are most appropriate in which contexts.

This analysis is based on a set of interviews with decision-makers, in particular World Bank project leaders, and on a literature review on decision-making under uncertainty. It aims at helping decision-makers identify which method is more appropriate in a given context, as a function of the project’s lifetime, cost, and vulnerability.

This paper is a product of the Office of the Chief Economist, Sustainable Development Network. It is part of a larger effort by the World Bank to provide open access to its research and make a contribution to development policy discussions around the world. Policy Research Working Papers are also posted on the Web at <http://econ.worldbank.org>. The author may be contacted at shallegatte@worldbank.org.

The Policy Research Working Paper Series disseminates the findings of work in progress to encourage the exchange of ideas about development issues. An objective of the series is to get the findings out quickly, even if the presentations are less than fully polished. The papers carry the names of the authors and should be cited accordingly. The findings, interpretations, and conclusions expressed in this paper are entirely those of the authors. They do not necessarily represent the views of the International Bank for Reconstruction and Development/World Bank and its affiliated organizations, or those of the Executive Directors of the World Bank or the governments they represent.

Investment Decision Making Under Deep Uncertainty – Application to Climate Change

Stéphane Hallegatte, Ankur Shah, Robert Lempert, Casey Brown, Stuart Gill

Keyword: decision-making under uncertainty, investment, climate change, adaptation

JEL: D81, H54, O22, O18, Q54

Stéphane Hallegatte¹, Ankur Shah², Robert Lempert³, Casey Brown⁴, Stuart Gill²

¹ The World Bank, Sustainable Development Network, Office of the Chief Economist

² The Global Facility for Disaster Risk Reduction, The World Bank

³ RAND Corporation, Santa Monica Office

⁴ International Research Institute for Climate and Society, University of Massachusetts

The authors would like to thank Roberto Aiello, Arturo Ardila, Ken Chomitz, Patrice Dumas, Marianne Fay, Erick Fernandez, Nagaraja Harshadeep, Abas Jha, Todd Johnson, Marcelino Madrigal, Shomik Mehndiratta, John Nash, Niels Holm-Nielsen, Apurva Sanghi, Pascale Scandizzo, Tomas Serebrinsky, and Xiaoping Wang for their time, insights and contributions.

1. INTRODUCTION

deep uncertainty is a situation in which analysts do not know or cannot agree on (1) models that relate key forces that shape the future, (2) probability distributions of key variables and parameters in these models, and/or (3) the value of alternative outcomes.

Many investment decisions have long term consequences. Infrastructure in particular can shape development for decades or centuries, a duration that often extends beyond infrastructure’s lifetime because the economic system reorganizes itself around them.

Making decisions on infrastructure therefore requires anticipating the long term environment, needs and constraints under which it will function. This need for anticipation brings large uncertainty in the decision-making process, for instance from demographic or economic projections. Past evidence suggests indeed that our ability to predict the future is rather limited and that these limitations need to be taken into account in the way decisions are made. An illustration of these limits is provided in Figure 1, which shows scenarios from the 1970s for US primary energy use. These scenarios were designed on the basis of past relationships that were revealed to be mostly wrong. The 1973 oil shock triggered innovation and behavioral and policy change that led to large increases in energy efficiency.

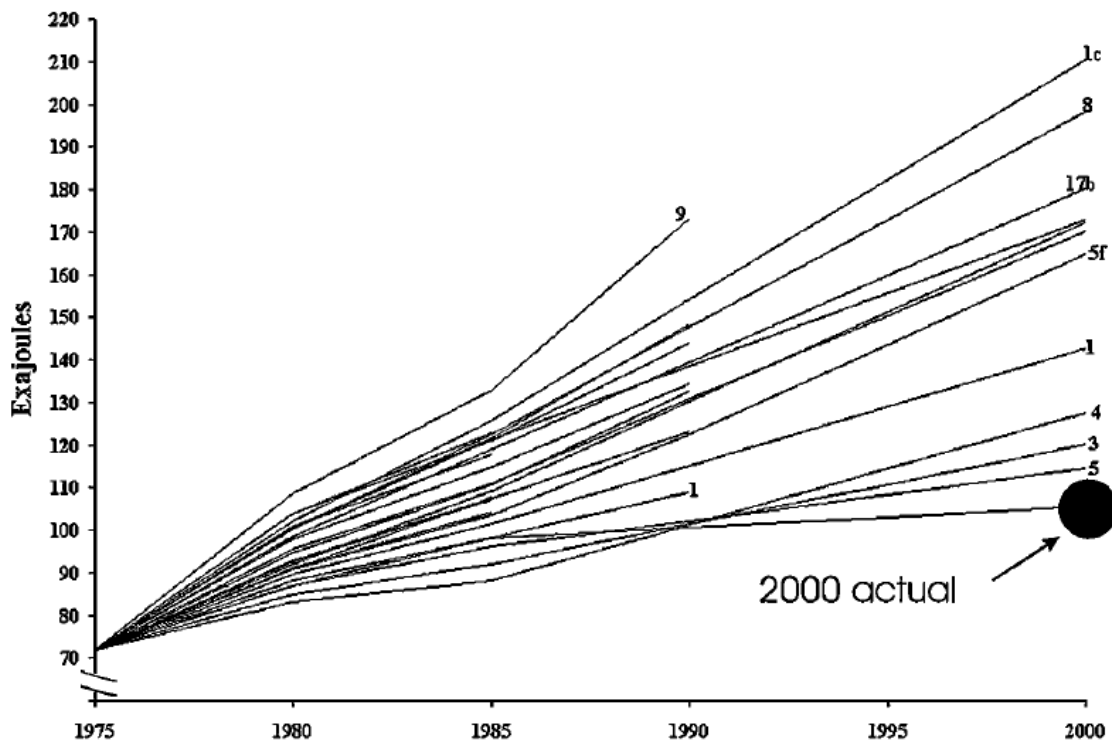


Figure 1: Scenario created in the 1970’s for primary energy use in the US, and actual use in 2000 (Source: Craig et al., 2002).

Decision-makers have always been used to managing such uncertainty, and they do so by using various decision-making methodologies, from simple heuristics (e.g., adding safety margins to all

design characteristics to cope with larger-than-expected extreme events) to more sophisticated methods (e.g., based on subjective probability and cost-benefit analysis). But today, climate change is bringing another layer of deep uncertainty that make decisions even more difficult. The possibility of rather radical changes in the environmental conditions under which infrastructure performs cannot be ruled out, and its design needs to take this possibility into account.

Facing large differences between climate models (sometimes even on the sign of precipitation changes), the introduction of climate change projections into project design has revealed challenging, and today few examples of successful taking into account of global change can be identified.

Assuming that climate change and other deep uncertainties cannot be eliminated over the short term (and probably even over the longer term), this paper aims at summarizing existing decision-making methodologies that are able to deal with uncertainty, and especially with climate uncertainty. It also provides examples of application of these methodologies, highlighting their pros and cons. It aims at helping decision-makers identify which method is more appropriate in a given context, as a function of the project lifetime, cost, and vulnerability. This analysis is based on a set of interviews with decision-makers, in particular World Bank project leaders, and on a literature review on decision-making under uncertainty.

We first present the principles of decision-making under uncertainty, with some of the possible consequences for investments, some sources of uncertainty, and how approaches to quantify deep uncertainty have fared. We then examine trade-offs between “robustness” and “optimality” focused approaches, demonstrate an illustrative example of a robust decision process, and document some co-benefits of robustness.

Second, we present the benefits and constraints of four available methodologies. Because the methodologies investigated – CBA under uncertainty, CBA with a Real Options approach, Robust Decision Making, and Climate Informed Decision Analysis – all have different strengths and applicabilities, the development of a decision tool to choose amongst them is not a simple matter.

Finally, we propose cases studies. One is a case where the underestimation of uncertainty led to design issues with a large-scale project, requiring costly retrofit investments. The three others are applications of the methodologies proposed in the paper.

2. THE PROBLEM

In his seminal 1921 paper, Knight made a functional distinction between two levels of ignorance about our uncertain future – that which can be reliably quantified (Knightian risk) and that which cannot (Knightian uncertainty). For example, the number of car accidents each year in France, easily calculable from ample historical data, is an example of Knightian risk, while an answer to many of the fundamental questions regarding climate change would be neither reliable nor verifiable for many years.

From a causal perspective, Knightian uncertainties may be either aleatory or epistemic in nature. Aleatory uncertainties are thought to be irreducible due to the nature of complex systems: they represent fundamentally complex or arbitrary behavior. Epistemic uncertainties, on the other hand,

are due to the insufficiency of our models, ignorance in our choice of parameters, inaccuracy of our measurements, or other remediable offenses.

In this work, we refer to “deep” uncertainty as the presence of one or more of the following three elements: (1) Knightian uncertainty: multiple possible future worlds without known relative probabilities; (2) Multiple divergent but equally-valid world-views, including values used to define criteria of success; and (3) Decisions which adapt over time and cannot be considered independently.

The larger a role any of these factors play in the decision(s) in question, the “deeper” the uncertainty may be considered. Conversely, the smaller a role these factors play, the “shallower” the uncertainty. Clearly, climate change is a fantastic example of “very deep” uncertainty – with plenty of competing viewpoints and values, no clear probabilities within any of them, and highly interrelated decision series over time.

2.1 Effects of climate uncertainty on investments

Increasing uncertainty.

When designing climate-sensitive investments, we are accustomed to using historical weather and climate data. Engineers use it in the design of infrastructure and buildings, the insurance industry to calculate premiums and capital needs, and farmers depend on it to choose crops and scheduling. Even national governments base their assessments of energy security requirements on such data.

With the projected changes in climate, however, historical data is no longer as useful for planning

Ideally, we would have well-behaved climate models that allow us to produce climate statistics for the future. Unfortunately, two problems make it impossible to provide the equivalent of historical climate data for future climates:

- First, there is a **scale misfit** between what can be provided by climate models (resolution of ~50 km for physical downscaling and ~ 10 km for statistical downscaling) and what is needed by decision-makers.
- Second, and most importantly, **climate change uncertainty is significant**, due to both the inherent uncertainty of the earth’s climate system and the limitations of our understanding of that system as represented in climate model projections.

An Example: Climate Models in West Africa

Given the likelihood of climate change in West Africa, a Ghanaian hydraulic engineer would be wise to ask climate modelers to predict precipitation rates for the next 100 years, instead of relying on historical data. But using a climate model might be dangerously misleading: projections of future precipitation changes in the region are very uncertain.

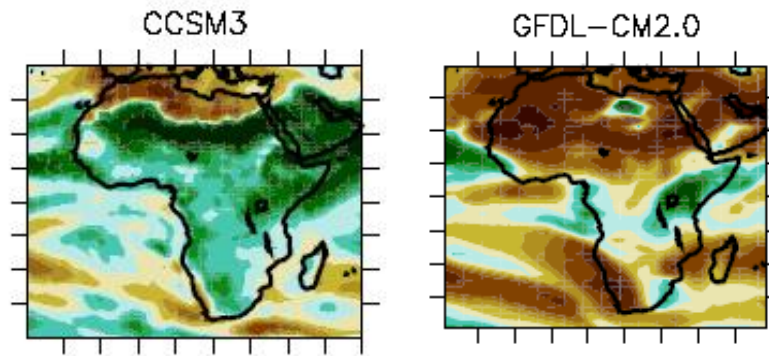


Figure 2: Change in annual rainfall in 2080-2100 (with respect to the 1980-2000 period) in Africa according to two climate models (IPCC, 2007).

Figure 2 demonstrates change in annual rainfall in 2080-2100 (with respect to the 1980-2000 period) in Africa according to two climate models (IPCC, 2007). For Ghana, CCSM3 predicts a 20% increase in precipitation, while GFDL predicts a 30% decrease! Rather than building a water infrastructure project specifically for one scenario, he would be well-served to engage in a process that determines a diversity of scenarios over which the project should perform in a satisfactory manner.

In addition to climate-level uncertainties, most sectors also have to deal with the further difficulty of predicting the responses of ecological systems to climatic changes. The responses of these systems are often site-specific and non-linear, and we have very little in the way of models integrating climate and ecological systems.

Who is affected?

Many decisions come with a long term commitment and can be very climate sensitive. Examples of such decisions include urbanization plans, risk management strategies, infrastructure development for water management or transportation, and building design and norms. These decisions have consequences over periods of 50 to 200 years. Urbanization plans influence city structures over even longer timescales. And infrastructure and urban plans influence the spatial distribution of activities even beyond their lifetime (Gusdorf et al., 2008; Bleakley and Lin, 2010). These kinds of decisions and investments are also vulnerable to changes in climate conditions and sea level rise.

For example, many building are supposed to last up to one hundred years and will have to cope in 2100 with climate conditions that, according to most climate models, will be radically different from current ones. So, when designing a building, architects and engineers have to be aware of and account for the future changes that can be expected.

Table 1 proposes a list of sectors in which decisions should already take into account climate change, because they involve long-term planning, long-lived investments and some irreversibility in choices, and are exposed to changes in climate conditions.

Sector	Time scale	Exposure
Water infrastructures (e.g., dams, reservoirs)	30–200 yr	+ + +
Land-use planning (e.g., in flood plain or coastal areas)	>100 yr	+ + +
Coastline and flood defences (e.g., dikes, sea walls)	>50 yr	+ + +
Building and housing (e.g., insulation, windows)	30–150 yr	+ +
Transportation infrastructure (e.g., port, bridges)	30–200 yr	+
Urbanism (e.g., urban density, parks)	>100yr	+
Energy production (e.g., nuclear plant cooling system)	20–70 yr	+

Table 1: Illustrative list of sectors with high inertia and high exposure to climate conditions (from Hallegatte, 2009).

How are we affected?

When faced with such large degrees of uncertainty that our normal prediction-based decision-making tools become inoperative or irrelevant, we may either seek to reduce the uncertainty, or develop “coping strategies” to make decisions in these situations. This project is about the second option, namely the development of different decision-making strategies.

2.2 Sources of uncertainty and downscaling

Climate change uncertainties arise from three major sources:

- **Future emissions of greenhouse gases**, which are linked to demographic and socio-economic evolutions, to available technologies, to values and preferences (e.g., development models), and to policies. This uncertainty is linked to scientific uncertainty (what futures are possible?), but also to a policy uncertainty, which is a positive uncertainty that represents our ability to choose our future.
- **Scientific uncertainty**, which is created by our imperfect knowledge of the functioning of the climate system and of affected systems. It is for instance the uncertainty on the response of the global mean temperature to a given quantity of greenhouse gases (GHG) (including “Climate sensitivity”, i.e. the increase in global mean temperature for a doubling of the CO₂ concentration in the atmosphere), but also the uncertainty in the regional effects of global warming, and the uncertainty on the reaction of affected systems, such as lakes, glaciers and ecosystems.
- **Natural variability**, i.e. the fact that global climate variables have their own dynamics, linked to the chaotic behavior of the climate system. *Climate models provide information of statistical nature (averages, variance, likelihood to exceed thresholds, etc.), but they do not provide*

forecasts, i.e. deterministic prediction of the future. In other terms, they can estimate the average number of rainy days in the summers of 2060s, but do not say anything about the any given day or even any specific summer.

These three uncertainties are sometimes referred to as policy, epistemic, and aleatory uncertainty, respectively. Their respective shares depend on the timescale and the space scale. At global scale (Fig. 3, left panel), and over the short term, natural variability and model response play the largest roles, and the emission a very small role; over the long term, the emissions dominate other sources of uncertainty.

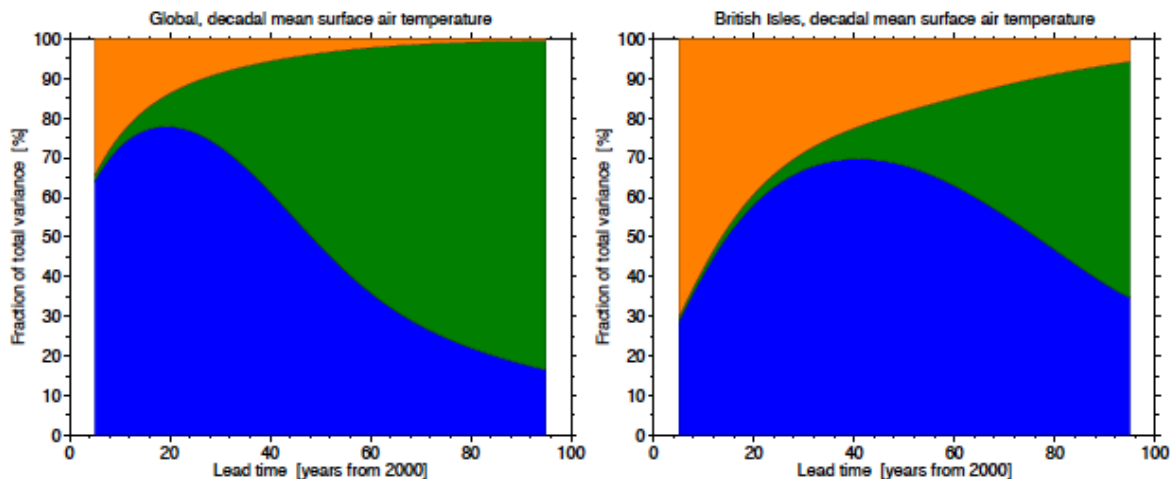


Figure 3: The green is emission uncertainty, the orange is natural variability, and the blue is (climate) model uncertainty; the variable is temperature change. Source: Hawkins and Sutton, BAMS, 2009.

It is thus critical not to over-interpret the difference between two climate scenarios run with different emissions or different models. The difference might be caused by aleatory uncertainty, with no significance. To interpret the difference between two scenarios in a rigorous manner, it is necessary to use *ensembles*, i.e. a sufficiently large set of simulations run with the same model and the same emission scenario. The spread of these simulations will represent the effect of natural variability as simulated by the model, and only differences that are robust to this effect can be interpreted as the effect of different emissions or of using different models.

Also, it is critical to account for the fact that the spread across models do not represent the full uncertainty. All climate models use the same knowledge base, and are based on the same basic methodologies (e.g., the discretization of ocean and atmosphere dynamics in a grid, parametrization of many physical mechanisms such as convection). So it is very likely that all models share common biases, making the epistemic uncertainty larger than differences across models. One example is the IPCC 2007 report of sea level rise uncertainty: since all analyses misrepresented the role of ice dynamics in sea level rise, all estimates of sea level rise reported in the IPCC 2007 shared the same problem and their range could not be considered as a fair representation of the real uncertainty on future sea level. The same problem may exist in other domains, for instance in how climate models represent convection and monsoons in India or West Africa, making the model projection in these

regions particularly uncertain. Even when all models agree (e.g. on a decrease in rainfall in the Mediterranean basin), there is still an uncertainty that needs to be considered.

At a regional (or continental) scale, the factors' respective shares are different – natural variability is much more important at regional than at global scale, and climate model uncertainty is still large (see Fig. 3, right panel); emission uncertainty plays a more moderate role. It shows that when looking at one countries or one region, it is much more difficult to predict future climates, regardless of future progress in our understanding of climate change: natural variability means that the climate signal is more difficult to extract (and – as already mentioned – *forecasts* of future climate remain out of reach).

Also, there is a large uncertainty arising from *differences between global climate models*. The IPCC provides results from 19 global climate models. Even though the models agree on the very big picture (more warming in high latitude than in low latitude; more precipitations in high latitudes; less precipitation around the tropics; more precipitation around the equator), the differences can be huge in some regions (e.g., half of the models predicts an increase in precipitation over India; half of the model predicts the opposite; and – as a consequence – the “average model” predicts no change, showing the risk of using an average model).

When looking at local scale, we usually do not use global climate models. Instead, we use “downscaling techniques”, which can be done with statistical tools or with regional climate models (RCM). Statistical methods use statistical relationships, calibrated on historical data, to relate large-scale drivers – which climate models can reproduce – to local phenomena – which climate models cannot reproduce (Elsner and Jagger, 2006; Mestre and Hallegatte, 2008; Nuissier et al., 2011). Even though our knowledge of the laws of physics helps selecting potential predictors, this method is not directly based on physical laws. Such statistical methods are computationally efficient and have often a good ability to reproduce the current climate. Statistical models, however, have two main drawbacks: first, they need long series of reliable data; second, even with a sufficiently large data range, it is difficult to know whether a statistical relationship will remain valid in a future climate.

To avoid the problem of validity of historical relationships, one may use physical models, which are based on physical laws. Physical models are of particular interest when investigating extreme patterns and variability changes. Of course, physical models often require calibration and bias correction, so that the distinction between physical models and statistical models is sometimes fuzzy. Examples are Regional Climate Models (RCMs); see (Knutson et al., 2010). RCMs are heavy to develop and use and can only have resolution of about 25 km, but are less data-dependent. The confidence in RCMs is generally higher, because they do not have to assume that the relationship between large-scale and small-climate climate variables remain constant in a future – possibly very different – climate, which is questionable. It is thus considered that statistical analyses are more reliable over the short to medium term, while RCMs are necessary for large warming, over the long term. Nonetheless, on the long term RCMs remain driven by the input from GCMs, and so they do not resolve uncertainty related to climate variability, for example, that is produced by the GCMs.

In almost all cases, the use of these downscaling techniques improves the ability to reproduce the current climate, but it does not mean that it improves the ability to project future changes.

In some cases, however, downscaling makes it possible to represent additional mechanisms and is likely to improve both the ability of represent the current and future climate (for instance, downscaling technique is required to look at precipitation in coastal or mountainous areas, or to look at small-scale phenomenon like heavy precipitations). But this is only true when the regional climate models are able to demonstrate the ability to reproduce the historical climate feature of interest without elaborate bias correction.

But in all cases, downscaling cannot help with the uncertainty if global climate models disagree (like in West Africa and the monsoon): it will refine a precipitation-increasing scenario and a precipitation-decreasing scenario, but the difference between both will not be affected.

When downscaling is considered useful, we should rely on existing data and results when it is possible. Many research-oriented downscaling projects exist in the scientific community, and it is often not necessary to fund downscaling for planning or project purposes. If the question is on how extreme precipitations will change, for instance, a climatologist will often be able to provide a review of knowledge and provide in a few days what an expensive downscaling exercise would provide in months. It is thus more useful to build capacity in client countries (e.g., through the funding of research or training programs like the AMMA project¹) than to finance downscaling exercises carried out by developed-country consultants. Also, the multiplication of “operational” downscaling exercise consumes resources that could be used to improve our understanding of the climate system and research on downscaling methodologies. Decision-makers in need for downscaled information should build on existing projects instead of creating new ones.

Capacity building in this field would be more efficient through the creation of local expertise centers, financed as research & development institutions.

All this uncertainty does not mean that climate projections are useless. In many cases, climate model information provides insights into what changes can be expected. Working on Europe, most climate models project an increase in summer temperature variability: we need to look at heat wave vulnerability; in North Africa, all models find a decrease in precipitation: we need to look at water availability and irrigation; in India, many (but not all) models find a large increase in heavy monsoon precipitation: we need to look at floods; etc. These model results help prepare for future climates, even though they do not provide the information we would like to have in an ideal world.

One important recommendation, however, is always to complement model results with expert knowledge.

When testing project robustness, looking also outside the range of model results is advisable: since all models are based on the same knowledge, they may share the same error, and the future may be

¹ AMMA is the African Monsoon Multidisciplinary Analysis, a research project financed by many developed countries (EU, France, US, Japan, etc.) that includes research on climate science, agronomy, and social sciences in West Africa. Interestingly, it helped finance the development of research groups in Africa, the creation of new university programs in African Universities, and regular summer schools. Beyond direct results, this project has thus a significant capacity-building legacy. See Redelsperger 2006 or www.amma-international.org.

outside the range projected by models.

2.3 Attempts to quantify uncertainty

Though uncertainty is often defined as risk that cannot be quantified (Knight 1921), most techniques to handle uncertainty involve attempts to quantify it in one way or another. Deep uncertainties challenge these methods.

Error Bars

It would be extremely useful to provide “error bars” on climate projection. Though some innovative methods have been proposed (e.g., Allen and Stainforth, 2002; Forest et al., 2002; Tebaldi et al., 2004; and others), there is no consensus on their value for operational decision-making.

Moreover, these “errors bars” should be produced not only from scientific information – they also depend on political choices and subjective judgments. For instance, one might be more pessimistic when considering a flood barrier for a 10-million inhabitant city than when considering the location of a train line, for instance, because the consequences of failure are much large in the former case. **It is thus impossible to quantify climate uncertainty independently of the decision to be made, and of subjective judgments that only decision-makers can make** (IPCC, 2012).

Assigning Probabilities to Models

Some have proposed to use the various models to assess the uncertainty: if 50% of the models predict an increase in hurricane intensity then we could attribute a likelihood of 50% to such an increase. This method of deriving probabilities is simplistic. There is no reason why existing models should represent the real uncertainty: they may all have the same flaw, since they are all based on the same incomplete and imperfect knowledge.

Also, the ability of a model to reproduce past and present climates is an important criterion to assess its value. But it is not because a model is better than another at reproducing present climate that it is automatically also better at projecting future climate change. There is no consensus on how to rank models according to their “quality.”

Calculating probabilities of future climate changes based on projections from climate models remains an active research topic in the science community because of their perceived utility for decision-making. However, due to the inability to assess the models’ skill in correctly predicting those probabilities, the resulting probabilities are best viewed as subjective or expert judgment. In fact, it may be entirely appropriate to use expert judgment as the basis for subjective probabilities that enter into decision analysis. In many cases this inevitably occurs in regard to variables that are not climate related (e.g., projected population growth, income levels, discount rates).

Long-term forecasting

It would be extremely useful to be able to forecast climate change over the next two decades in order to implement adaptation plans. However, climate change is relatively limited at these time scales, and climate variability is such that the climate change signal is not dominant (see Figure 3). Consequently, climate models, which only reproduce natural variability at the statistical level, are incapable of

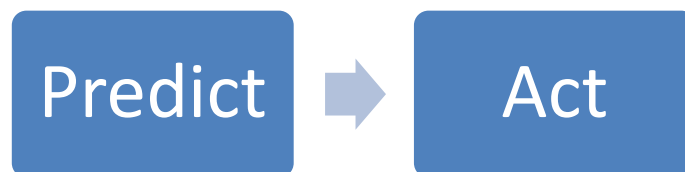
predicting changes in the near future. It is therefore essential not to over-interpret the results of these models over the short-term, and not to use their output as forecasts, without taking into account natural variability.

The inability of models to predict climate changes in the next two decades could change if work on the ten-years forecast – a focus of research today – progresses. This would nevertheless require considerable strides in numeric modeling and better knowledge of ocean conditions that determine climate change on these time scales. Improved knowledge requires more developed measurement networks in oceans worldwide.

2.4 Robustness and optimality

Traditional decision-making processes seek optimality.

Traditional decision-making processes work through the prediction of a future state, and the design of plans or projects for the conditions of that state. This approach produces optimal results for the intended future, but its application may be increasingly limited as we are faced with larger uncertainties.



When addressing quantifiable uncertainty – i.e. what is commonly refer to as “risk” – this method can be extended to consider multiple states characterized by a probability of occurrence. These probabilities are sometimes determined by a frequency-based method (How often did the event E occur in the past?), or by belief-based analysis such as Bayesian analysis (What are the odds of the event E ? How much do I trust my model?).

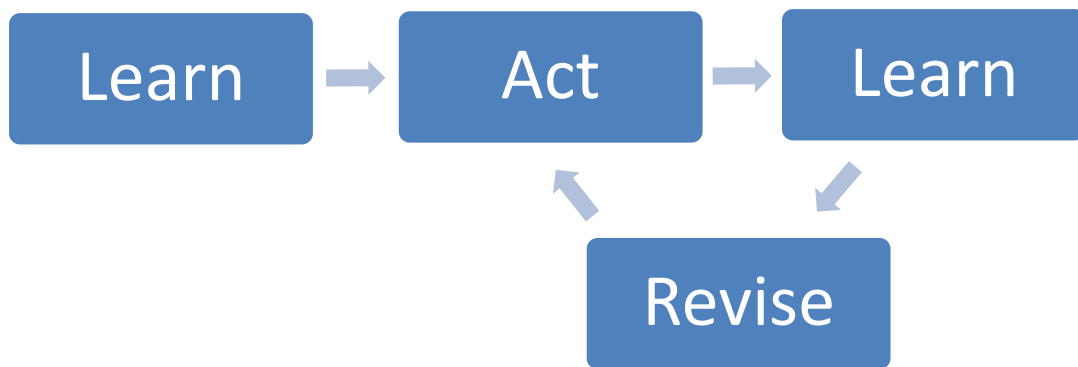
But as uncertainty gets more profound, we become less able to characterize its distribution (i.e. the probability of occurrence), and lose corresponding confidence in our predictions. In such a situation, the optimal solution may be designed for a world whose existence is uncertain, and may perform poorly for other plausible, yet unanalyzed, worlds. The method is particularly dangerous because of the well-identified tendency toward over-confidence in our ability to predict the future (Slovic et al., 1981).

Accepting uncertainty mandates a focus on robustness.

A robust decision process implies the selection of a project or plan which meets its intended goals – e.g., increase access to safe water, reduce floods, upgrade slums, or many others– across a variety of plausible futures. As such, we first look at the vulnerabilities of a plan (or set of possible plans) to a field of possible variables. We then identify a set of plausible futures, incorporating sets of the variables examined, and evaluate the performance of each plan under each future. Finally, we can identify which plans are robust to the futures deemed likely or otherwise important to consider.

As robust processes imply an acceptance of uncertainty, they also demand a process of dialogue to determine which project vulnerabilities to consider, which performance metrics suggest success, acceptable levels of risk, and which possible scenarios to evaluate. The stakeholder process is an opportunity to further fortify the project against uncertainty, as a variety of viewpoints and concerns can simultaneously be addressed in distinct scenarios. Incorporation of multiple scenarios builds consensus on the outputs (the project) despite differing inputs (world-views, priorities, and desires).

Robust decision making processes – in the line of the long tradition in adaptive management theory – are iterative and adaptive by nature: one round of analysis may suggest analysis of alternative project directions, or combinations of available policies. Application to climate change adaptation has already been proposed; see for instance Ranger et al. (2010) and a review in O’Brien et al. (2012). Since robust processes map possible investment strategies to the climate that best favors them, integrating new information may allow decision makers to switch from one strategy to another. Thus, action and learning are carried out in parallel, and inform each other. In other terms, “waiting for more information” is never an option since information has to be created with experimentation, monitoring, and analysis; if information is not sufficient to make the investment decision, then an “information creation” plan is required.



One critique of robust approaches is their apparent “pessimism” and potential sensitivity to worst-case scenarios. Unfortunately, rather than being an artifact of the methodology, *this is the reality of climate change adaptation (IPCC 2012°*. Given deep uncertainty about future climate change and relevant socio-economic trends, the choice among strategies may be unavoidably sensitive to poorly understood worst-cases. Robust processes deal with this challenge through stakeholder participation and exchange with experts. A negotiated, participatory process helps produce a chosen strategy, which may or may not be expected to perform well in all the worst-case scenarios identified by the analysis. However, a successful process for identifying robust strategies will help participants to consider a wide range of options, and to understand the range of future conditions over which their chosen strategy should be expected to perform well, as well as the residual risks that they have chosen to accept.

We see both robust and optimal techniques as necessary elements in a decision-making process involving deep uncertainties. While analyses focused on optimality are vulnerable to overconfidence bias, they are in general simpler to conduct and may provide usefully starting points for robust

analyses. In contrast, robust approaches will often require more analysis, but can lead to better understanding of risks and to strategies that manage a broader range of risks. In some cases, optimal techniques may be sufficient, while in other cases robust approaches will offer significant value-added. While expanding the range of risks considered may in some situations seem detrimental to successful resolution of a decision process, purposefully ignoring important uncertainties may at least as often prove detrimental to successful outcomes. Managed risk-taking is an essential part of development, and inseparable from innovation.

2.5 An example of optimal and robustness analysis

Imagine a heavily forested catchment area where the government aims at regulating downstream floods and providing irrigation for local farmers. Standard analysis based on historical rainfall and runoff might predict a certain set of hydrological and meteorological conditions, scenario “A”, for the next twenty years. Different scenarios are possible, of course, but their likelihood is either a) ignored, or b) assigned ad-hoc probabilities for the sake of analysis.

Land management investment opportunities include building one or more dams, setting up canals and pricing schemes for irrigation, and a forest management plan to control erosion and runoff from timber harvesting.

A group of experts comes up with plans X, Y, and Z, reflecting different combinations and parameters of the above options:

X	One medium-size dam, some canals and contracts for irrigation water, with no forest management component.
Y	Two smaller dams, some canals and contracts for irrigation water, and a small forest management component.
Z	One small dam, large scale community-driven earthworks and irrigation ponds and a large forest management component.

Table 2: Three options to at regulate floods and provide irrigation for local farmers

Taking climate uncertainties into account as well as possible shifts in timber management of private landowners in the catchment area, responding to uncertain market conditions and government timber policies, we may end up looking at the following scenarios, for the sake of illustration:

A	Climate and land management along predictable lines from the past
B	Heavier rainfall and increased demand for timber
C	Lower rainfall and no change in timber demand
D	Lower rainfall and increased demand for afforestation due to REDD effects

Table 3: Four scenarios for future climate and timber demand.

Analyzing the vulnerability of each of our plans to the different plausible futures gives us the following matrix:

	A Climate and land management along predictable lines from the past	B Heavier rainfall and increased demand for timber	C Lower rainfall and no change in timber demand	D Lower rainfall and increased demand for afforestation due to REDD effects
X	++++	--	++	+
Y	+++	+	+++	++
Z	++	++	++	+++

Table 4: Assessment of the performance of the three options in the four scenarios.

One first approach to decision-making would be to invest in research and investigation to determine which one of the four possible futures is the most likely, and then to select the option that performs best in this future. Most practitioners report that this is the demand they get from decision-makers, who want to know what is the best prediction for the future, in order to select the best option in this future. And if uncertainty was limited – i.e. if our knowledge base would make it possible to make forecasts for the future – this approach would be appropriate. One could for instance conclude that scenario A is the most likely, and that the option X is thus the most appropriate. This approach amounts to disregarding all scenarios except the most likely, and to use a predict-then-act approach.

When uncertainty is larger, this approach does not work, because it is impossible to determine which scenario is the most likely, or because several scenarios are equally plausible. In such a situation, one option is to attribute probabilities to the different scenarios, and to use a cost-benefit analysis under uncertainty to determine the “best” strategy. This method accepts the existence of uncertainty, and deal with it using probabilities, which can be determined through various techniques.

A robust approach, on the other hand, might first prioritize a vulnerability analysis of project options, as each plan is vulnerable to changes in climate, as well as to shifting demand and practices in the agriculture and forestry sectors. In such an approach, we do not start by investigating the scenarios plausibility or probability, but by investigating the vulnerability of various strategies in different scenarios.

Indeed, plan X could lead to a dangerous negative in the excess rain scenario (with heavy erosion, siltation, and flooding) and would suffer from excess capacity in scenarios C and D. The analysis thus identifies heavier rainfall as the primary vulnerability. Those concerned about worst-case plausible scenarios will eliminate X as an option, and decide between Y and Z, for example, based on relative estimated probabilities of the scenarios and further expert input. Additionally, more plans could be

constructed from the original policy elements upon further sensitivity analysis and cost-benefit breakdown of each element.

In addition, the analysis shows the potential for integration with the types of flexible strategy that are the focus of real options techniques – it is easier to build a smaller dam first, with expansionary capability, than building a larger dam of potentially needless size. Other techniques that are more flexible (such as forest management policy) can be adapted to each “optimal” case depending on new information on climate and demand, once the initial matrix of robustness has been generated.

2.6 Co-benefits of robustness

While shifting to more robust decision processes is primarily a technique to make better decisions under deep uncertainty through finding project options' sensitivities to uncertainties, it also provides a series of co-benefits, advantages over a traditional decision-making process focused on optimality. These co-benefits may help offset the added time and cost and learning-curve of the techniques involved.

a. Avoid excessive discounting

Many climate change adaptation projects or projects which otherwise attempt to avoid large but unlikely events and costs over the longer term will be selected against by traditional discounting methods employed in a CBA. While alternative discounting theories exist and are argued for², they have not gained wide acceptance in World Bank policy³. Robustness frameworks provide an opportunity to avoid this negative effect of discounting by selecting for high return projects *within* a subset of project options that are demonstrably robust over the long term. As such, we can account for unquantifiable risk not captured in the discounting process.

b. Reduce vulnerability to over-confidence and surprises

Robust analyses typically utilize specialized local knowledge through stakeholder involvement to build a cloud of possible vulnerabilities much broader than project planners could conceive alone. These vulnerabilities are then examined to help confront our project with challenges experts may not have discovered. The explicit integration of low-probability events thus allows for more comprehensive vulnerability analysis and stronger projects in the end.

c. More complex definition of success & multiple worldviews

Because optimality approaches focus on optimizing for one variable (net present value or NPV), they can miss the valuation of secondary project effects. For example, a public transport system aimed at reducing commute time or greenhouse gas emissions may also support larger urban planning goals, an unmeasured secondary benefit. In the same example, by providing investment access to different

² For those interested in pursuing the subject further, the authors recommend Ramsey 1928, Harvey 1994, Arrow 1996, Portney and Weyant, 1999; Weitzman 2001, Gollier 2002, OXERA 2002, U.K. Treasury 2003, Heal 2005, and Stern 2006.

³ World Bank Operation Policy 10.04, for example, mandates calculating “discounted expected present value of its benefits, net of costs” (WB 1994). In a recent, and thorough, review of World Bank cost-benefit analyses, there was no mention of alternative discounting calculations (WB 2010). In practice, the discounting scheme gives a very low weight to long-term impacts, practically disregarding any climate change impact.

areas of the city, the project prevents resource and growth “lock-in”, a facet of a larger strategic goal.

Rather than disregarding what they cannot predict or measure, robust approaches evaluate a variety of project options, across different uncertainties, incorporating multiple axes of success.

Robust approaches can incorporate multiple views of the future, allowing parties with different world-views and priorities to engage in the same process, making it possible to agree on a “best” solution, which is impossible with a NPV when there are conflicting ideas of success.

2.7. Robust approaches

One can identify options and measures that are most adapted to the current situation of deep uncertainty. Some of them are listed in the following section, with a few illustrations. This list does not pretend to be exhaustive, but suggests ideas for more robust strategies.

No-regret strategies

“No-regret” measures constitute a first category of strategies that are able to cope with climate uncertainty. These strategies yield benefits even in forecasts reveal wrong. For example, controlling leakages in water pipes is almost always considered a very good investment from a cost-benefit analysis point-of-view, regardless of how climate changes. Land-use policies that aim at limiting urbanization and development in certain flood-prone areas (e.g., coastal zones in Louisiana or Florida) would reduce disaster losses in the present climate, and climate change may only make them more desirable. Also, in many locations, especially coastal cities, building sea walls would be economically justified by storm surge risks with the current sea level, and sea level rise would only make these walls more socially beneficial. *The identification of sub-optimality in the current situation* may help identify adaptation options that are beneficial over the short term (and easier to implement from a political point of view) and efficient to reduce long-term climate vulnerability.

Reversible and flexible strategies

Second, it is wise to favor strategies that are reversible and flexible over irreversible choices. The aim is to keep as low as possible the cost of being wrong about future climate change. Among these examples, one can mention insurance and early warning systems that can be adjusted every year in response to the arrival of new information on risks. Another example is restrictive urban planning. When deciding whether to allow the urbanization of an area potentially at risk of flooding if climate change increases river runoff, the decision-maker must be aware of the fact that one answer is reversible while the other is not. Refusing to urbanize, indeed, has a well known short-term cost, but if new information shows in the future that the area is safe, urbanization can be allowed virtually overnight. This option, therefore, is highly reversible, even though it is not costless since it may prevent profitable investments from being realized. Allowing urbanization now, on the other hand, yields short-term benefits, but if the area is found dangerous in the future, the choice will be between retreat and protection, both of which may be difficult and expensive. Of course, it does not mean that urbanization should always be rejected. It only means that, in the decision-making process, the value of the reversibility of a strategy, often referred to as the “option value” (see below), should be taken into account.

Safety-margin strategies

Third, there are “safety margin” strategies that reduce vulnerability at negative, null, or negligible cost. There are already practical applications today. For instance, to calibrate drainage infrastructure, water managers in Copenhagen now use runoff figures that are 70 percent larger than their current level. Some of this increase is meant to deal with population growth and the rest is to cope with climate change, which may lead to an increase in heavy precipitation over Denmark. This 70 percent increase has not been precisely calibrated, because such a calibration is made impossible by climate change uncertainty. But this increase is thought to be large enough to cope with almost any possible climate change during this century, considering the information provided by all climate models. This move is justified by the fact that, in the design phase, it is inexpensive to implement a drainage system able to cope with increased precipitation. On the other hand, modifying the system after it has been built is difficult and expensive. It is wise, therefore, to be over-pessimistic in the design phase.

The existence of cheap safety margins is especially important for adaptation measures that are not reversible or flexible. The options that are irreversible (e.g., retreat from coastal areas) and in which no cheap safety margins are available are particularly inadequate in the current context. The options that are irreversible but in which safety margins can be introduced (e.g., coastal defenses or improvement of urban water-management infrastructures) can be implemented, but only with a careful taking into account of future climate change scenarios.

Strategies that reduce decision-making time horizons

The uncertainty regarding future climate conditions increases rapidly with time. Reducing the lifetime of investments, therefore, is an option to reduce uncertainty and corresponding costs. This strategy has already been implemented in the forestry sector by choosing species that have a shorter rotation time. Since species choice cannot be made reversible and no safety margins are available in this sector, this option is interesting in spite of its cost. In other sectors, it is also often possible to avoid long-term commitment and choose shorter-lived decisions. For example, if houses will be built in an area that may become at risk of flooding if precipitation increases, it may be rational to build cheaper houses with a shorter lifetime instead of high-quality houses meant to last one hundred years.

3. METHODOLOGIES

This section proposes a review of some of the methodologies that have been proposed to cope with deep uncertainty in investment decision. These include cost benefit analysis, real options analysis, climate informed decision analysis, and robust decision making. While we necessarily present our list as four distinct methodologies, in practice they can overlap. The latter two methods are both “context-first” (Ranger et. al. 2010) robust decision approaches that differ mostly in the particular analytic tools they employ and their relative emphasis on climate versus the combination of climate and socio-economic uncertainties. The first two have routinely been incorporated within robust decision analyses as means of valuing alternative strategies. The difference is that in their pure form cost benefit and real options analyses yield a single value measure for each strategy. In robust analyses, the cost-benefit and real option value of a strategy may vary over a wide range of future conditions.

3.1 CBA and CBA under uncertainty (e.g., Arrow et al., 1996)

The cost-benefit analysis approach (private as well as public) involves the following steps: (i) identify

competing projects; (ii) identify sources of uncertainty and future possible states of the world; (iii) evaluate the costs and benefits for each project; (iv) calculate the present value of costs and benefits; (v) calculate the net present value of different competing projects; and (vi) evaluate the robustness of the result.

For instance, assessing a protection of the city of New Orleans against category-5 hurricanes can be done by comparing the cost of building and maintaining such a protection (C) with the benefits B , that can be estimated as a discounted sum of the benefits (i.e. the avoided losses), over the lifetime of the protection (from Hallegatte 2006):

$$B = \sum_0^T P_n \left(\frac{1}{1+\delta} \right)^n d_n$$

A first CBA can be done using “first-guess” parameters:

- A construction cost of \$20 billion.
- an annual probability that a Category 5 hurricane hits New Orleans at about $p = 1/500$;
- a discount rate of 3 and 7 percent (following US regulations);
- an estimate of the direct cost of the New Orleans flooding at around \$20 billion;
- A cost of human losses of \$5 billion.

In that case, the expected present benefit of a Category 5 flood protection system in New Orleans can be calculated at \$1.3 billion with a 7 percent discount rate and \$6 billion with a 3 percent discount rate. This rough estimate clearly rules out an upgrade of the protection system to make it able to cope with Category 5 storms.

Let us now look at the uncertainty on each of these parameters:

- Choice of the discount rate. As illustrated by our comparison of 3 and 7 percent discount rates, the influence of this political choice is large. Since this choice is very controversial and depends on ethical judgment on which it is difficult to reach consensus, the assessment of the system benefit will remain very uncertain.
- Probability of occurrence. If we assume that climate change and subsidence may multiply by 5 the probability of the floods currently caused by Category 5 hurricanes over the 21st century (this is within the bounds of current estimates), then expected benefits from protection against Category 5 hurricanes would rise from \$1.3 to \$2.4 billion or from \$6 to \$23 billion, depending on the discount rate (7 percent and 3 percent, respectively).
- The flood costs. Flood costs evaluated by insurance companies are poor proxies of welfare costs, especially concerning large-scale events. A conservative estimate of the actual overall cost of the New Orleans floods is at least two times the insurers’ approximation based on direct losses only; that is, \$60 billion. Using the new values of event probability and potential damages, the expected benefit of an upgraded protection system would be \$4.8 billion with a 7 percent discount rate and \$46 billion with a 3 percent discount rate.

- Countervailing risks and side effects. The implementation of a large-scale protection system can attract more people in at-risk location, and increase vulnerability in case of defense failure (Hallegatte 2011). But it can also attract more activities, improve infrastructure, create jobs and income, and thus improve welfare more than one an analysis of direct costs only can suggest. These effects are very difficult to estimate and can easily double (or divide by two) expected benefits, making them range between \$0.6 billion to \$92 billion.
- Risk aversion: A society that would use the previous method to assess a protection system is called “risk-neutral.” A risk-neutral agent is indifferent to risk; i.e., it does not see any difference between losing \$1 with certainty and having a 10 percent chance of losing \$10, because the expected loss is the same in both cases. Including an aversion to risk increases the benefit from protection.
- Heterogeneity of damages: Benefits are also larger if one takes into account the fact that only a fraction of the population is affected by floods (and some of the losses cannot be shared through solidarity mechanisms) and that the affected population is often already poorer than average (see also Harberger, 1974; Harberger, 1986). Indeed, it is not equivalent for a group of 10 people either to lose \$1 each, or to know that one of them will lose \$10. Taking this into account – by using the sum of individual utility functions instead of a single social utility function – can increase benefits by 50% (and much more if basic needs are included in the analysis), making them reach more than \$140 billion.

Results from the CBA appear thus extremely dependent on parameters on which there is no scientific agreement (e.g., the impact on climate change on hurricanes) or no consensus (e.g., the discount rate).

Cost-Benefit Analysis under uncertainty

In such a situation of uncertainty, it is sometimes possible to attribute “subjective probabilities”, i.e. beliefs on the likelihood of different possible “states of the worlds”, and to evaluate the expected benefits as the probability-weighted average of the benefits in the different possible states of the world.

If we assume that there is a $P=1/3$ probability that the category-5 probability stays constant, and a $(1-P)=2/3$ probability that it increases up to 1-out-of-100-years in 2100, then the expected benefit can be written:

$$B = P \sum_0^T p_n \left(\frac{1}{1+\delta} \right)^n d_0 (1+g)^n + (1-P) \sum_0^T p'_n \left(\frac{1}{1+\delta} \right)^n d_0 (1+g)^n$$

Where p_n stays constant (a “state of the world” in which climate change has no influence on hurricanes) and p'_n increases up to 1-out-of-100-years (a “state of the world” in which climate change increases the likelihood of cat-5 hurricane landfall). This method is widely used in situations of quantifiable uncertainty. The problem is that – for climate change – we do not have a strong methodology to assess these subjective probabilities. They cannot be fully based on the past, because climate change is a new process for which we have no equivalent in the past. Models share common

flaws and their dispersion cannot be used to assess the real uncertainty.

Also, this method does not help when there is a disagreement on ethical judgment and world views: in absence of an consensus on the objective (and an indicator measuring success), CBA is extremely difficult to use.

Suggestions

These results suggest that a CBA is useful but should encompass the whole set of possible assumptions to check its robustness. In situation with limited uncertainty, the CBA (and the robustness analysis) can be helpful to identify the best investment opportunities. The situation is different in presence of large uncertainties. The example of New Orleans and hurricane protection shows that CBA can reach very different results for reasonable parameter values.

Here benefits from protection range from \$0.6 billion to \$140 billion depending on scientific assumptions (e.g., the impact of climate change on hurricanes) and ethical judgment and world views (e.g., the aversion to risk and inequality). This situation is common and the CBA can rarely be used to make a decision in an objective way.

Moreover, when using probability distribution function for different outcomes, the CBA is extremely sensitive to tails of distribution function. As suggested by Weitzman (2009), for instance, assuming that climate change damages have a heavy tail suggests that all GHG emissions should be stopped immediately.

CBA, however, can be extremely useful to collect information (and stakeholder opinion) on the consequences of a project, and to help organize the debate, by linking the different opinions of various groups on what should be done to different opinions about the parameters of the analysis (e.g., the discount rate, or the amount of avoidable losses).

In a situation of deep uncertainty, CBA should therefore be understood as a complement and a tool to open consultations and discussions, not as a replacement for them.

3.2 Methodology: real options⁴

In a context of increasing knowledge – and thus decreasing uncertainty – the decision on an investment project is not between “investing” and “not investing”, but between “investing now” and “investing later with more information.” To help making this type of decision, some have proposed to mobilize the “real option” approach, which was initially developed for financial markets (Arrow and Fisher 1974, Henry 1974, Ha-Duong 1998, Pindyck 2002, Gollier and Treich 2003, Dotsis et al. 2005).

A real option (RO) is the faculty, but not the obligation, to undertake a project of uncertain future benefits at a known cost. Applied to decision-making, RO values the options created and destroyed by a project, alongside its expected net present value.

⁴ This section partly relies on inputs from Pascale Scuandizzo.

The analysis itself does not differ from a classical cost-benefit analysis, except that the NPV includes additional consideration, namely the options created and destroyed by the project. The project's Extended NPV is calculated as follows:

$$\text{ENPV} = \text{Expected Net Present Value} + (\text{Value of Options created} - \text{Value of Options Destroyed})$$

Thus an investment which has positive net benefits (exploiting existing capabilities) but fails to create new options may be less desirable than an investment with fewer direct benefits but which results in increased options (the ability to explore different opportunities). In other terms, there is a value in implementing a project that does not provide any benefit per se, but makes it possible to implement another project at a later point in time.

A common example is for a government to buy a plot to prevent its development by private actors, not to use it immediately but to make it possible to use it at a later stage (which would have been made impossible in case of private development). Buying the plot has a cost, and creates no direct benefits. Its assessment may thus appear negative. But doing so make it possible to for the government to use the plot at a later stage (i.e. it creates the option of using it later), which is not the case if the plot is not bought.

Another useful example is on climate change mitigation (Ha Duong et al., 1998). The project of investing in R&D on renewable energy may have a negative NPV if considered in isolation from other policies. But doing so may create new technologies that will be absolutely necessary in 20 years when very ambitious climate policies are implemented. So an investment in renewable energy R&D is desirable only because it will create the option of rapid decarbonization in the future, not because of its own return.

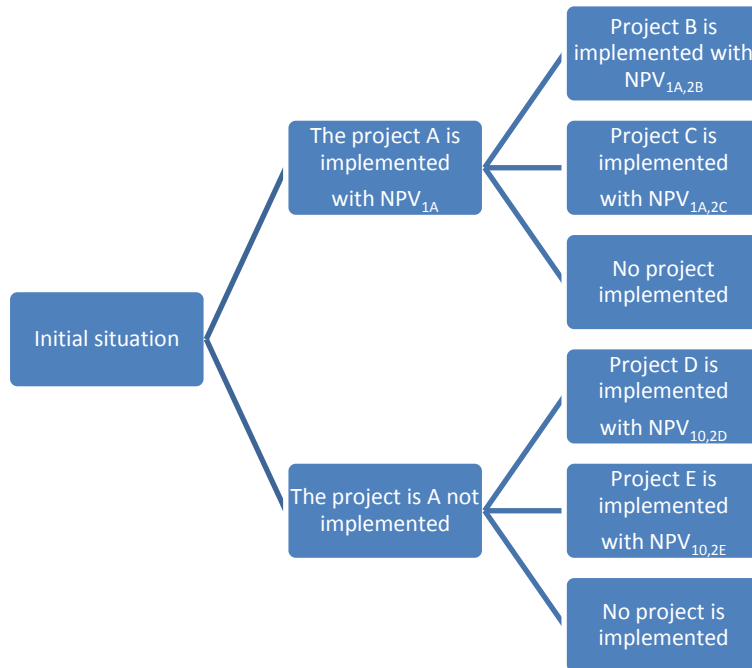
In practice, this approach leads to two foci: “timeliness” and “flexibility”.

The “timeliness” focus, though typically seen as holding the ability to postpone all or part of an irreversible investment decision until more information is available, can also apply to *not* postponing immediate action when, for example, severe pollution presents a threat of irreversible species extinction.

The “flexibility” focus evaluates all types of options that the project can create as a consequence of its design, such as the options to exit, to suspend, to contract or to expand activity. In the case of climate change, the approach may be particularly useful to evaluate adaptation options, such as the options to cope, to rebound, to abandon, to retreat and to flexibly adjust along one or several dimensions.

Method Details

The implementation of the real option method is similar to a CBA, but it requires considering decision-making over at least two period. The analyzed project (labeled project A, e.g., R&D on renewable energy) can be implemented during the first period. Then, a set of projects (B, C, D, E) can be implemented during the second period, and their costs and benefits depend on the first-period decision, resulting in a decision-making tree.



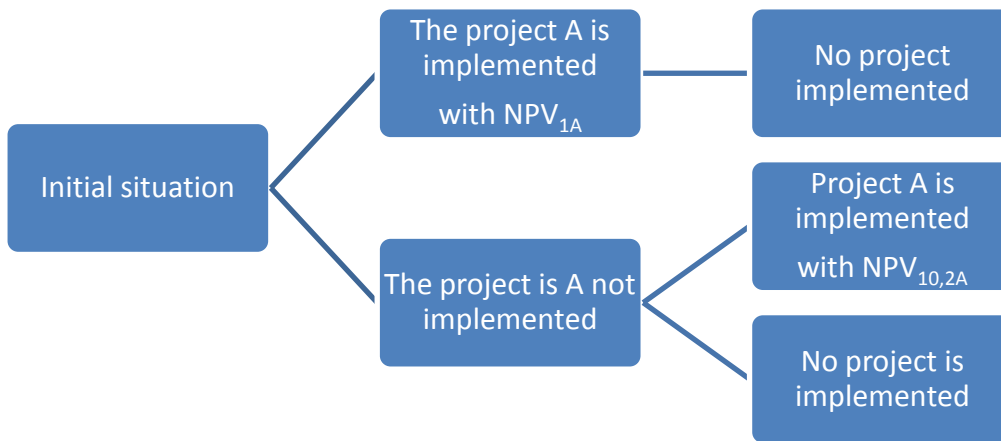
The optimal choice made during the second period is determined by the choice made in the first period⁵:

- Assuming that $NPA_{1A,2B} > NPA_{1A,2C} > 0$, then implementing the project A during the first period will lead to the implementation of the project B during the second period.
- Assuming that $NPA_{10,2D} > NPA_{10,2E} > 0$, then not implementing the project A during the first period will lead to the implementation of the project D during the second period.

The difference $(NPA_{1A,2B} - NPA_{10,2D})$ is the real option value created by the project A at the first period : the implementation of project A allows for the implementation of project B and its benefits. The total value of project A is thus: $NPV_{1A} + (NPA_{1A,2B} - NPA_{10,2D})$.

A special case is the case where project A is identical to project B.

⁵ Note that NPV of projects implemented at the second period are discounted to the present, i.e. to the first period.



In that case, the value of the project A implemented during the second period ($NPV_{10,2A}$) can be larger than the value of the same project during the first period (NPV_{1A}), because the uncertainty has been reduced and the project design can be improved. In that case, the value of project A during the first period is: $NPV_{1A} - NPV_{10,2A}$. If $NPV_{1A} < NPV_{10,2A}$ then it is better to wait until period 2 to implement project A.

In practice, the method can be made more sophisticated (and much more complex) by considering a continuous time instead of a series of periods.

Applicability

The real options approach can be applied to improve the accuracy of economic evaluation and add a measure of robustness within an optimality-seeking framework in which:

- Uncertainty is more “dynamic” than “deep”: Our knowledge improves over time, i.e. decision-makers have confidence that some of the uncertainty will be resolved by the passage of time (e.g., thanks to better scientific knowledge on climate change, or to the observation of socio-economic trends).
- The project involves significant irreversible investments or creates/destroys significant capabilities that matter for future decision-making.

Benefits

- Attractive analytically because it can be readily incorporated into a social cost-benefit framework.
- Allows for explicit valuation of created and destroyed capabilities (expressed as options) in general investments, often not accounted for in standard CBA.

Constraints

- Benefits of increased information and higher ENPV after waiting assumes some uncertainty will be resolved with time.
- Complexity is much larger, because multiple set of decisions need to be included in the analysis, sometimes leading to problems that are difficult or impossible to resolve.

3.3 Methodology: Climate informed decision analysis

Climate Informed Decision Analysis (CIDA; also known as “decision scaling”) is a method of incorporating climate change information into a decision-making process, by first identifying which sets of climate changes would affect the project and then determining the likelihood of those sets. As such, it connects “bottom-up” vulnerability analysis with “top-down” climate model information, and retains the strengths of both approaches. As a process committed to acceptance of deep uncertainties, CIDA does not attempt to reduce uncertainties or make predictions, but rather determine which decision options are robust to a variety of plausible futures.

Method Details

Climate Informed Decisions Scaling (CIDA) has three major phases:

1. Determination of stakeholders concerns, mapping to observable indicators, assignment of tolerance to groups of indicators.
2. Determine relationship of climate changes to indicators, the quantified climate sensitivity of each plan. Climate sensitivity is determined by assessing each plan to a wide range of possible climate changes. The climate conditions that are problematic to each plan are identified, as well as opportunities associated with future climates. A decision map (contingency matrix) is produced, identifying each decision's performance under different climate possibilities, as well as the best decision for a given future climate (similarly to our Table 4). A map of which decision options are optimal under which groups of climate conditions can be constructed.
3. Using GCMs (and possibly downscaling), stochastic modeling, or expert judgment, determine plausibility (subjectively derived probability) of relevant groups of climate conditions identified in (2). The plausibilities are seen as the best possible use of the uncertain climate projections. Decision option is then based on application of decision-to-climate performance to relative climate plausibilities.

Applicability

The primary applicability is for decisions regarding long-term investments which may have climate vulnerabilities. While standard decision-analysis requires well-characterized uncertainties, CIDA was developed to handle poorly-characterized climate change uncertainties and to make the best use of available climate information. It can be used as a framework for climate risk analysis of a planned project, or to help decide among multiple project options.

Benefits

- Determines the utility of downscaling a GCM for the decision in question, potentially avoiding an unnecessary investment, and ensures climate information produced is directly relevant to the decision process.
- Identifies climate vulnerabilities of a given project without relying on uncertain GCM projections.
- Distinct vulnerability analysis and climate projections allow for easily updated analysis when new (and presumably better) GCM projections become available.
- Applies the GCM information late in the process, reducing the impacts of GCM uncertainties

on the decision as a whole.

- Allows alternative visions of the future (e.g., probability based on GCM projections vs continued historical climate vs uniform probability to all possible futures) to be incorporated into the decision.
- Outputs a clear mapping of decision options to climate futures, facilitating an adaptive management process to react to observed changes in climate indicators.
- Explicitly addresses the limits of our ability to anticipate the future for any project.

Constraints

- Our ignorance regarding the plausibility of different climate scenarios forces CIDA to rely on subjective judgment to determine which scenarios to take seriously.
- Quality of the initial stakeholder process determines the relevance and efficacy of the entire decision process.
- Requires quantitative modeling of the project of interest and its response to climate change.

Resources and contact

Analysis can take a couple of months if all modeling tools are available (at a cost below \$100k), and up to 1-2 years if everything has to be created (and a cost up to \$200k). Contact : Casey Brown, University of Massachusetts, Amherst, cbrown@ecs.umass.edu.

Example: Climate Risk Assessment of Niger Basin Investment Program, 2010, AFTWR

(http://www.worldresourcesreport.org/files/wrr/papers/wrr_brown_uncertainty.pdf)

Phase 1

The decision-scaling process for the Niger Basin investment program began with the elicitation of the priority concerns and key decision thresholds of the stakeholder countries through a workshop conducted with the Niger Basin Authority in Ouagadougou, Burkina Faso in May 2010. Small group discussions were convened to attempt to define thresholds of acceptable versus unacceptable performance in terms of the identified project objectives. It was ultimately agreed by the workshop participants that decreases in average performance of less than 20% from the baseline conditions was considered an acceptable level of risk, while decreases of 20% or greater were defined as unacceptable.

Phase 2

The next step was to model the response of the basin investment plan performance to changes in climate conditions, to find which conditions led to unacceptable performance metrics. The existing water resources systems model of the Niger Basin Authority revealed a nearly linear relationship between the values of the performance metrics and changes in streamflow, in addition to demonstrating that basin-wide averages of precipitation and temperature provided very good approximations of annual streamflow throughout the basin. Climate sensitivity was quantified, relating the performance metrics to changes in basin-wide temperature and precipitation.

Phase 3

In the final step of the analysis, a multi-model, multi-run ensemble of climate projections with 38 members was used to assess the expectation of future climate conditions. Because the climate

response function was defined in terms of the basin-wide precipitation and temperature changes, and the Niger Basin is even larger than the units of the GCMs, the GCM projections were actually *scaled up* through spatial averaging to produce estimates of changes over the entire basin. This improves the credibility of the projections and allows significantly easier processing of the projections. The values of precipitation and temperature from each GCM were input to each performance metric's climate response function, and the results organized into categories according to risk.

Findings

The results of this process made clear that, based on GCM projections for West Africa, there was relatively small risk due to climate change to the planned investments.

3.4 Methodology: Robust decision making

Robust Decision Making (RDM) provides a decision framework developed specifically for decisions with long-term consequences and deep uncertainty (Schwartz 1996, Lempert and Schlesinger 2000, Lempert et al. 2006, Groves and Lempert 2007, Lempert and Collins 2007, Hallegatte 2009). An RDM analysis begins with an existing or proposed project plan and exhaustively explores its vulnerabilities and sensitivities, through stakeholder involvement and analytical methods. It then uses this information to identify potential vulnerability-reducing modifications to the plan. The proposed modifications are then presented to decision-makers for evaluation of adoption.

RDM is designed to support stakeholder dialogues that help define project objectives, including the range of uncertainties considered and the scenarios that best describe any vulnerabilities. As a "context-first" process that inverts the traditional ordering of an analytic decision-making process, RDM only considers probability distributions in the final steps of the analysis, thus facilitating the use of imprecise or missing probabilistic information, as well as facilitating engagement among stakeholders who may hold differing expectations about the future.

Method Details

Robust Decision Making (RDM) has four major phases:

1. Stakeholder process to determine a) Candidate strategy, or different "policy levers" available, b) Performance metrics used for evaluation, and c) Range of uncertainties to consider.
2. Configure models and create large database of simulation runs, examining candidate strategy or set of policy levers over wide range of alternative future states.
3. Algorithmically determine clusters of scenarios where candidate strategy demonstrated vulnerability.
4. Identify options for reducing vulnerabilities, and associated tradeoffs.

Key to the RDM analysis is the iterative process: lessons which emerge from step 4 and sent back to step 1 for another round of analysis, until vulnerabilities are below acceptable levels.

Applicability

RDM often proves most valuable in situations with:

1. Multiple, deep uncertainties (e.g. climate, economic, and technological) that may make it

- difficult to apply traditional probabilistic analyses
2. Stakeholders who hold a variety of world-views, priorities, and definitions of success
 3. A rich portfolio of decision options that make it possible to identify project plans robust over many different futures
 4. Long-term commitments that make it difficult to reverse near-term choices.

RDM normally involves a detailed quantitative analysis, but the underlying framework can inform more “heuristic” – less resource-intensive – evaluations. RDM is especially useful when project plans can be framed as a series of decisions over time, to take advantage of learning explicitly and adjust to new information as it comes along.

Benefits

- Full vulnerability analysis of proposed projects
- Transparent, reproducible, and exhaustive scenario discovery reduces over-confidence bias
- Stakeholder process to define measures of success and potential futures builds consensus on project action even under diverse assumptions and priorities
- Adaptive decision process explicitly addresses the limits of our ability to anticipate the future for any project
- Project alternatives and plans evolve from existing project options.

Constraints

- Time and cost intensive
- Quality of the stakeholder process influences the relevance and efficacy of analysis, especially regarding the range of policies available, uncertainties considered, and choice of worst-case scenario
- Requires extensive quantitative modeling of project area.

Resources and contact

The cost of a full RDM analysis largely depends on whether or not a suitable simulation model is available at the start of a project. The time and cost of RDM analyses has ranged from a few months to a year and from on the order of \$100k (where a simulation model already exists) to \$500k (including the development of the model). Contact: Robert Lempert, RAND, lempert@rand.com.

4. CASE STUDIES

4.1 Ho Chi Minh City and flood risks

Recognition of Risk

Ho Chi Minh City (HCMC) ranks fourth globally among coastal cities most vulnerable to climate change. HCMC already experiences extensive routine flooding; In the coming decades increased precipitation and rising sea levels could permanently inundate a large portion of the city's, place the poor at particular risk, and threaten new economic development in low-lying areas.

In response to these challenges, HCMC has over the last fifteen years developed plans for, and started implementing, numerous infrastructure projects to mitigate the flood risk. The multi-billion dollar investment plans in sewage and drainage infrastructure included, over the years:

- 6000 km of canals and pipes covering 650 km² in the city, to upgrade discharge capacity of the storm sewer system and to address land up-filling.
- Roughly 172 km dikes and river barriers, mainly for tidal control.
- A tide control plan that uses at least 12 gates and 170 km of dikes to create a polder system.

These plans were based on the best predictions of future climate and development available to planners at the time.

Challenges of Prediction

Recent analysis suggests however that climate change and urbanization will be larger than anticipated, and some variables are already beyond the maximum that were considered in the design phase. These surprises require significant revisions to the plans. At-risk infrastructure includes:

- The canals and pipes built principally to upgrade discharge capacity of the storm sewer system may not be able to handle increased flows.
- Increases in precipitation and tide levels observed over the last decade already exceed those projected and may over-top dikes and barriers.
- Future saline intrusion and rainfall intensity may be more severe than anticipated, potentially rendering the poldering plans obsolete even before they have been approved.

Since the plan was created, the city has also experienced unprojected urbanization in low-density areas, perhaps due to the illusion of safety associated with the presence of flood prevention infrastructure. The HCMC Steering Committee for Flood Control (SCFC) is concerned the insufficiency of the planned infrastructure may worsen flooding in some areas of HCMC. **In this case, the intervention's legacy will have been an *increase* in vulnerability.**

Robustness

Today, the SCFC is preparing an Integrated Flood Management Strategy to synchronize the existing master plans for storm sewer system, flood control system, and urban development. **Aware of the consequences of underestimating uncertainty, they have chosen a robust approach to address the following:**

- Their prior approaches to planning consistently under- or mis-estimated uncertainties
- Suggested plans proved brittle to broken assumptions, leading to costly realignment
- Difficulties in reaching consensus among diverse actors and agendas

Through an integrated, robust approach, the SCFC is accepting the role of persistent, deep uncertainties as a new component in its planning process.

4.2. From CBA to regret minimization: The case of dam dimensioning

Nassopoulos et al. (2011) applies the idea of robustness to dam dimensioning in the water management sector, a sector that is particularly sensitive to climate conditions. Since investments like dams are made for very long time, they require the taking into account of future changes. With climate change, hydro-climatic parameters would be modified, affecting runoff, soil moisture and groundwater level. On account of quantitatively and qualitatively altered water resources and affected water consumption, the conception of hydraulic infrastructure will have to be revised.

They use a cost-benefit analysis to determine the optimal size of a water reservoir in the Pyli basin, a Mediterranean mountainous catchment in northern Greece, which is part of an important water development project for the Acheloos River. The optimal size depends on construction costs, on the economic value of water, on the discount rate, and on climate conditions. In this region, climate change will affect runoffs, but this effect is uncertain: some models project a decrease in runoff by up to 21%, while others project stable runoffs. This uncertainty complicates the design of a water reservoir.

The water demand satisfied by the reservoir yields an economic benefit which is set to the discounted value of water:

$$B(K) = \sum_y \frac{1}{1 + r + ng} D(K, y) p_w(y),$$

where r is the pure time preference, g is the growth rate of the economy, n is the income elasticity, $D(K, y)$ is the water demand that can be satisfied each year y by a reservoir of size K , and $p_w(y)$ is the unit water price. It is considered that the unit water value is independent of the demand level and grows at the same rate than the economy.

The optimal dam dimension is determined by the maximization of the net present value of the water system: $NPV = \max (B(K) - C(K))$, where $C(K)$ is the cost of the dam, as a function of its size. Figure 4 shows how the NPV varies with the dam volume, for different values of the pure time preference and for different models.

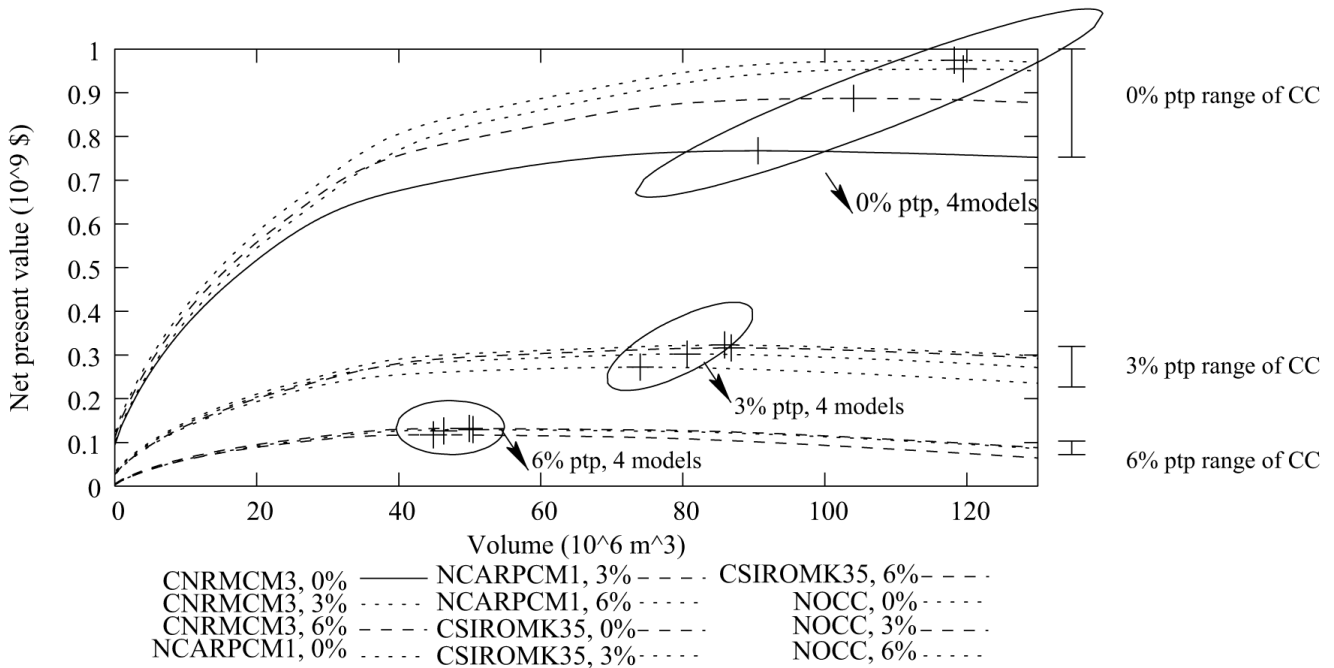


Figure 4: Net present value as a function of reservoir volume. Three models and the no-climate change case (NOCC) are shown and three rates of pure time preference. The models (CNRMCM3, NCARPCM1 and CSIROMK35) exhibit different changes in variability and mean. The purpose is not to show the precise NPV of each model but to illustrate, beside the usual pure time preference effect (lower NPV and optimal volume for higher pure time preference), the reduction of NPV difference between models under climate change. Indeed, the NPV range is much larger for a 0% pure time preference

When there is no dam, the net present value is $B(0)$. The dam is worth being built if the net present value obtained with the dam is higher than the net present value without dam, i.e. if:

$$\max [B(K) - C(K)] - B(0) > 0.$$

The net present value NPV is the value of the full water system including the value of water and not only the value of the man-made reservoir.

Applied to 19 climate models from the IPCC (2007), Table 5 shows how using different climate models in such a cost-benefit analysis leads to very different choices in terms of optimal dimensioning, highlighting the need to use multiple models to avoid potential maladaptation.

Climate models	Change in optimal reservoir volume (%)	
	0% pure time preference	6% pure time preference
BCCRBCM20	-12	-7
CCCMACGCM31	-15	-6
CNRMCM3	-23	-10
CSIROMK30	-16	-8
CSIROMK35	-12	-7

GFDLCM20	-14	-4
GFDLCM21	-21	-8
GISSMODELER	-21	-8
INGVECHAM4	-22	-9
INMCM30	-4	-3
IPSLCM4	-20	-8
MIROC32MEDRES	-6	-3
MIUBECHOG	-18	-9
MPIECHAM5	-22	-8
MRICGCM232A	-7	-4
NCARCCSM30	-12	-5
NCARPCM1	1	1
UKMOHADCM3	-10	-4
UKMOHADGEM1	0	0

Table 5: Percent change in optimal volume storage relative to a case with no climate change (historic baseline), for a 10km valley length, and two rates of pure time preference.

In some models, the change in optimal volume can reach 23% with a 0% time preference and 10% with a 6% time preference, showing that climate change will influence strongly the optimal design of water infrastructure. There is therefore a potential for sunk-costs, in case a large reservoir is constructed while actual climate change finally calls for a smaller reservoir. Correspondingly, there is a potential for regret if a small reservoir is constructed in spite of a potential for satisfying a larger water demand.

The paper then calculates the “regret” (or error cost) if the reservoir is designed using one of the models, while another one is the correct one (assuming that one model is correct, which has no reason to be true). The paper proposes to look for robustness by designing the dam using the volume with which the potential for regret is the smallest (a minimax approach). Looking at the corresponding models, two models have a maximum error cost that is the smallest, i.e. GFDLCM20 and CSIROCM35 (with a maximal error cost of 0.4%). With this volume, and assuming that the 19 models cover the full uncertainty, the potential for regret is thus extremely small and the design is robust.

Looking at the NPV of the resulting water supply, the analysis shows that climate change can lead to reduction of up to 30%, even assuming optimal adaptation. Such a decrease would have large consequences in downstream industries (such as agriculture, energy production, industry, etc.). This large possible reduction shows that even when a robust decision is made – i.e. a decision that has no large potential for regret –, the considered system (here the local economy that depends on water supply) may not be robust – i.e. the system is vulnerable to some of the scenarios.

Applied to this specific case, it shows that the analysis should not be restricted to a small system (the dam), but should be extended to a broader system (the dam and the water users), to maximize the robustness of the economy and the impact on welfare.

4.3. Climate Informed Decision Analysis applied to the management of the Great Lakes Basin

One example of successful incorporation of deep uncertainty into a decision-making process is the application of CIDA to management of the Great Lakes Basin in the United States. In 2007, the International Joint Commission (IJC) established an independent study board composed of United States (U.S.) and Canadian members to review the operation of structures controlling Lake Superior outflows and to evaluate improvements to the operating rules and criteria governing the system. The study is known as the International Upper Great Lakes Study (IUGLS). As a result of the considerable uncertainty associated with future climate and lake levels, as well as other sources of uncertainty such as ecosystem responses and the state of the navigation industry, a process of selecting the optimal plan based on a most probable future scenario was rejected in favor of a robust decision making process.

Underlying the process is the premise that we are limited in our ability to anticipate the future and therefore any recommended plan must perform well over a very broad range of possible futures.

The analysis of the Great Lakes Basin plan comprised three phases:

1. Identification of vulnerabilities by stakeholders and definition of acceptable and unacceptable lake levels for each impact area
2. Quantifying climate sensitivity for each proposed plan
3. Estimations of different climate plausibilities by a group of experts based on a variety of climate modeling approaches, including GCM studies, RCM studies and paleoclimate studies.

Identification of Vulnerabilities

In order to prioritize concerns for the regulation of Lake Superior, stakeholder experts were convened from state, provincial, federal, and local government agencies, as well as special interest groups (boating, hydroelectricity, navigation), and environmental groups (e.g. The Nature Conservancy). Termed technical working groups, the experts were divided among the following impact areas: ecosystems, hydro-power, commercial shipping, municipal and industrial water and wastewater systems, coastal systems, and recreational boating and tourism.

The experts were tasked with identifying the vulnerabilities of the system to climate changes and other changing conditions. A primary challenge was the quantification of vulnerabilities in commensurate units. To address this issue, the stakeholder groups were asked to define vulnerabilities in terms of lake levels, including the duration of the event. They first defined three levels of vulnerability, or “coping zones”:

- A: (acceptable)
- B: (significant negative impacts, but survivable)
- C: (intolerable without policy changes).

The stakeholder groups then defined what combination of lake level and duration led to the kind of impacts consistent with the coping zone descriptions. The definition of coping zones allowed the evaluation of regulation plan performance to be conducted in terms that are comparable across impact sector and defined by the stakeholders. It is a product of the shared vision planning process.

It was also agreed that the cost of the lake level going over the bounds of a management plan was potentially much higher than the cost of the lake level staying below the anticipated bounds of a management plan.

Quantification of Climate Sensitivity

For the Great Lakes application, the quantification of climate sensitivity was performed to identify climate conditions that cause failures in plan performance. The assessment was based on the creation of a climate response function which estimated the consequences (lake levels and associated performance metrics) of a given decision (regulation plan) for a given set of mean climate conditions (denominated in Net Basin Supply (NBS) – the sum of inflow and outflow of the lakes). The function thus related climate effects to the performance metrics influencing the decision.

Using a stochastic time series of NBS to represent changes in mean climate conditions, those climate conditions that presented risks to each regulation plan were identified. Note that although climate model projections have not been used in the analysis to this point, considerable information regarding climate impacts may be revealed by the vulnerability of proposed plans to potential climate futures.

Climate Plausibilities

Once the climate states that cause risks for a regulation plan are identified, the plausibility (relative probability) of those conditions is estimated through tailored climate information. Given the uncertainty associated with the probability estimates even after maximizing credibility, the term “plausibility” is used in place of probability.

The decision maker, in this case the Study Board, was presented with plausibility estimates of climate states associated with each regulation plan, and the sources of climate information (e.g., climate projections, stochastic analysis, paleo-climate data, expert opinion) that assigned probability to that state. The plausibility estimates may be adjusted based on different comfort levels of the Board members – because of the lack of confidence in available information, and the sensitivity to the worst-case scenario, the choice of plausible scenarios must be a participatory, negotiated process.

Dynamics and Adaptation

Two other features of the analysis are particularly relevant in this context: dynamics and adaptation.

The concept of a dynamic regulation plan involves the selection of a portfolio of plans, each optimized for a certain range of conditions. **The appropriate plan will be implemented based on the prevailing climate conditions, according to a set of identified triggers.** The ability to identify these trigger points, and base decisions upon them, is a key feature of robust analysis.

Though dynamic regulation provides robustness to a broad range of anticipated climates, it is well known that there are other uncertainties, including faulty assumptions and unforeseen surprises, which threaten the success of the regulation plan. For this reason, the process recommends incorporation of an adaptive management process into the regulation plan. The process consists of long-term monitoring of regulation plan performance and mechanisms for implementing changes when needed.

Conclusions

The climate risk of each regulation plan, according to a variety of sources of climate information, was presented to the Study Board. The Study Board prioritized the plausible risks estimated using the stochastic analysis over other climate information, such as climate projections based on General Circulation Models, due to the uncertainty associated with the GCMs. Recommendation for a final regulation plan is focused on two plans that performed best over a very wide range of future climates. The Study Board also recommended that the regulation plan be coupled with an adaptive management program to address future uncertainty. The Board expressed satisfaction in the use of climate information to make this decision.

For more information, see Brown et al. (2011).

4.4 RDM for Water Planners in Southern California *(for more information, see Feifel, K., 2010)*

Traditionally, water planners have used historical stream-flow data and weather patterns to infer seasonal water forecasts. However, as climate change is expected to change weather patterns, air temperature, and precipitation patterns in an as yet relatively unpredictable fashion at the local scale, water managers are seeking methods to incorporate the impacts of climate change into their current planning processes.

In 2006, the RAND Corporation worked with the Inland Empire Utility Agency (IEUA) to test its Robust Decision Making framework. In 2005, IEUA released its Regional Urban Water Management Plan (UWMP), in response to an anticipated population increase of 800,000 to 1.2 million people by 2030. The document outlines a plan to meet future water demands by improving water-use efficiency and developing local resources.

The RDM analysis took the UWMP as its initial strategy, used climate information from the National Center for Atmospheric Research, and employed a planning system from the Stockholm Environment Institute to assess how different policy levers would perform under a variety of possible futures.

The first run of RDM evaluated the proposed management plan under four climate scenarios. Findings generally indicated that if the impacts of climate change are minimal, the UWMP will meet its supply goals for 2030. However, if climate change causes significant warming and drying trends, the UWMP could perform poorly and miss many of its goals, causing economic losses.

Further runs of the model, using over 200 scenarios and eight additional management strategies, were then performed. Under this analysis, cost was 20% greater than expected in 120 of the 200 scenarios. They found that the UWMP was particularly vulnerable to future conditions that were drier with reduced access to imported water and when natural percolation of the ground water basin decreased. Novel strategies varied from increasing water use efficiency, recycling storm-water for ground water replenishment, and developing the region's water recycling program. In all cases, augmenting the UWMP with additional management strategies led to lower costs and reduced vulnerability.

It was concluded that local solutions should not be overlooked when developing solutions to the impacts of climate change. Local policies and management opportunities may be more cost effective, reliable, and feasible when compared to other options.

Under the RDM analysis, the best management plan was adaptive and included near-term

implementation of more water use efficiency techniques. When water managers were presented with these results, surveys indicated an increase in their confidence that they could adequately plan for the effects of climate change despite the uncertainty in forecasts.

5. CONCLUDING REMARKS

An investment decision is already difficult for any diverse group of actors, with different priorities and world views. But the presence of deep uncertainties linked to climate change further challenges the decision-making framework by questioning the robustness of all purportedly optimal solutions.

Our traditional decision making strategies and criteria were developed to address shallow uncertainties, in which we could trust a person or team to determine a reliable description of the future, come up with relative probabilities for various states (ie the calculation of risk), and, generally, look at each investment decision independently. In situations characterized by shallow uncertainties, it is indeed convenient to predict a future situation to use as a base for designing an investment project, optimizing the project to the situation.

Under situations characterized by deep uncertainty, however, we no longer have the luxury of imagining a world to build an optimal project around. Instead, decision makers must engage in a process to determine the worlds they wish to imagine, the investment options available, the fitness criteria used. Only then may they then measure the robustness of the proposed options across futures and world-views.

In this paper, we attempt to build on contemporary research in the field, to frame a discussion about robustness. The paper reaches several conclusions.

First, climate change introduces deep uncertainty in investment decisions, through several channels including (i) the future emissions of GHG; (ii) the response of the climate system to these emissions; (iii) the local changes due to global climate change; (iv) other systems' response to climate change (e.g., ecosystems or coastlines).

Second, the resolution of climate models is not appropriate for most weather-sensitive investment decisions, and "downscaling" is often carried out, to project climate variables at appropriate spatial and temporal scales. But when downscaling is considered useful, it is preferable to rely on existing data and results, instead of running project-specific downscaling exercises. Relying on climatologist expert knowledge is often cheaper, easier, quicker, and as useful as sophisticated downscaling techniques. Also, comparing two scenarios – run with different emissions or different models – need to include the role of natural variability: only the comparison of a set of scenarios can conclude that two models or two emission scenarios lead to outcomes that are significantly different. Finally, downscaling does not reduce the uncertainty on future climate change at local scale. Where global climate models disagree – e.g., on the sign of rainfall changes in West Africa – downscaled projections will disagree. The deep uncertainty caused by climate change is thus unavoidable.

Third, expert-based analytic methods such as cost-benefit analysis are necessary, but they cannot replace discussions among stakeholders. They should therefore be understood as a complement and a tool to open consultations and discussions, not as a replacement for them. In many instances, analytic

methods can be used as a tool to organize and drive consultations and debates, more than as a tool to make the decision in an objective manner.

Fourth, many methodologies to make decisions under deep uncertainty have been proposed, from cost-benefit analysis under uncertainty to real option and robust decision-making. It seems impossible to define the “best” solution nor to prescribe any particular methodology in general. In many real applications, a mix of these methodologies has been employed. Indeed, part of our vulnerability to deep uncertainties stems from our reliance on, and belief in, the validity of widely applicable prescriptive solutions. To the contrary, we find it extremely unlikely that any single methodology would be appropriate across the board. Instead, a menu of methodologies is required, together with some indications on which strategies are most appropriate in which contexts, in the line of Ranger et al. (2010). Providing such a menu is a long term objective of our work.

In such a context, we see both robust and optimal techniques as necessary elements in decision-making. While analyses focused on optimality are vulnerable to overconfidence bias (especially overconfidence in the probability of extreme events), robust approaches ask participants to a decision to consider a wide range of consequences and make choices about how robust they wish to be against them (Hallegatte 2011).

Using the methodologies discussed in this paper will require a better understand of decision-makers themselves. In-depth interviews with World Bank team leaders on the demand for tools to address deep uncertainty led to the following key findings:

- By the economic analysis stage, project traction has already been established, and major (potentially robustness-enhancing) options have already been eliminated. It is thus necessary to start thinking in terms of resilience and robustness from the initial stages of project design.
- Though there is currently low demand for deep-uncertainty analysis, it will increase as climate-related projects will face increasing scrutiny and competition for funding in coming years; the taking into account of climate risks and the uncertainty linked to them will thus grow over time.
- As stated in the introduction, decision-makers are used to managing uncertainties, and they often handle them through intuitive heuristics developed from extensive experience. For instance, uncertainties in extreme flood levels are usually managed through the introduction of safety margin in infrastructure design. But climate change brings new uncertainty, still unknown from decision-makers. Until they have such experience with deep climate uncertainties, real or simulated, their decision-making will suffer. We hope this paper may serve to expose them to the nuances of deep uncertainties and their management, and help them make better decisions.

Future research will be focused on developing heuristics to guide decision-makers on which methodology is most appropriate for a given issue, and on the “seamless” integration of these methodologies into decision-making process. Indeed, the decision-making methodology is supposed to support – not to replace – the decision-making process, and changes in methodologies may have to

interact with changes in process.

REFERENCES

- Arrow, K., and Fisher, A., 1974. Environmental preservation, uncertainty, and irreversibility. *The Quarterly Journal of Economics* 88, 312-319
- Arrow, K.J., M.L. Cropper, G.C. Eads, R.W. Hahn, L.B. Lave, R.G. Noll, P.R. Portney, M. Russel, R.L. Schmalensee, V.K. Smith, R.N. Stavins, 1996. *Benefit-Cost Analysis in Environmental, Health, and Safety Regulation*, American Enterprise Institute Books and Monographs.
- Arrow, K.J., M.L. Cropper, G.C. Eads, R.W. Hahn, L.B. Lave, R.G. Noll, P.R. Portney, M. Russel, R.L. Schmalensee, V.K. Smith, R.N. Stavins, 1996. *Benefit-Cost Analysis in Environmental, Health, and Safety Regulation*, American Enterprise Institute Books and Monographs.
- Bleakley, H., Lin, J., 2010. Portage: path dependence and increasing returns in US history. NBER Working Paper No. 16314.
- Brown, C., 2010. Decision-scaling for Robust Planning and Policy under Climate Uncertainty. World Resources Report, Washington DC. Available online at <http://www.worldresourcesreport.org>.
- Brown, Casey, William Werick, Wendy Leger, and David Fay, 2011. A Decision-Analytic Approach to Managing Climate Risks: Application to the Upper Great Lakes. *Journal of the American Water Resources Association* 47(3):524-534.
- Craig, P.P., Gadgil, A., Koomey, J.G., 2002. What Can History Teach Us? A Retrospective Examination of Long-Term Energy Forecasts for the United States. *Annual Review of Energy and the Environment* 27, 83–118.
- Dotsis, G., V. Makropoulou, et al., 2005. The Timing of Environmental Policies in the Presence of Extreme Events. *Real Options: Theory Meets Practice*; 9th Annual International Conference, Paris, France
- Elnor, J.B. and T.H. Jagger, 2006: Prediction models for annual U.S. hurricane counts. *J. Climate*, 19, 2935–2952.
- Feifel, K. (2010). Using Robust Decisionmaking as a Tool for Water Resources Planning in Southern California [Case study on a project of the RAND Corporation]. Product of EcoAdapt's State of Adaptation Program. Retrieved from CAKE: <http://www.cakex.org/case-studies/1029> (Last updated April 2010).
- Feifel, K., 2010. Using Robust Decisionmaking as a Tool for Water Resources Planning in Southern California [Case study on a project of the RAND Corporation]. Product of EcoAdapt's State of Adaptation Program.
- Gollier, C. & Treich, N., 2003. Decision-making under scientific uncertainty: the economics of the precautionary principle. *Journal of Risk and Uncertainty* 27, 77-103
- Gollier, C., 2002. Time Horizon and the Discount Rate. *Journal of Public Economics* 85, 463–473.
- Groves, D.G., Lempert, R.J., 2007. A new analytic method for finding policy-relevant scenarios. *Global Environmental Change* 17, 73–85.
- Gusdorf, F., S. Hallegatte, A. Lahellec, 2008, Time and space matter: how urban transitions create inequality, *Global Environment Change* 18(4), 708-719, doi:10.1016/j.gloenvcha.2008.06.005
- Ha-Duong, M., 1998. Quasi-option value and climate policy choices. *Energy Economics* 20, 599–620.
- Hallegatte, S. 2006, A Cost-Benefit Analysis of the New Orleans Flood Protection System. *Regulatory Analysis* 06-02. AEI-Brookings Joint Center, Mar 2006.
- Hallegatte, S., 2009: Strategies to adapt to an uncertain climate change, *Global Environmental Change* 19, 240-247

- Hallegatte, S., 2011. How economic growth and rational decisions can make disaster losses grow faster than wealth, Policy Research Working Paper 5617, The World Bank
- Harberger, A.C., 1978: On the use of distributional weights in social cost–benefit analysis. *Journal of Political Economy*, 86(2).
- Harberger, A.C., 1984: Basic needs versus distributional weights in social cost-benefit analysis, *Economic Development and Cultural Change*, 32(3):455-74.
- Harvey, C., 1994. The reasonableness of non-constant discounting. *Journal of Public Economics*, 53, 31–51.
- Heal, G., 2005. Intertemporal welfare economics and the environment, *Handbook of Environmental Economics*, Vol. 3, K.G. Mäler and J.R. Vincent (Eds.), Elsevier B.V.
- Henry, C., 1974. Investment decisions under uncertainty: the "Irreversibility Effect". *The American Economic Review* 64, 1006-1012
- IPCC, 2007. Climate Change: The Physical Science Basis. Contribution of Working Group I to the Fourth Assessment Report of the Intergovernmental Panel on Climate Change. Solomon, S., Qin, D., Manning, M., Chen, Z., Marquis, M., Averyt, K.B., Tignor, M., Miller, H.L. (Eds.), Cambridge University Press, Cambridge, United Kingdom and New York, NY, USA, 996 pp.
- IPCC, 2012: Meeting Report of the Intergovernmental Panel on Climate Change Expert Meeting on Economic Analysis, Costing Methods, and Ethics [Field, C.B., V. Barros, O. Edenhofer, R. Pichs-Madruga, Y. Sokona, M.D. Mastrandrea, K.J. Mach, and C. von Stechow (eds.)]. IPCC Working Group II Technical Support Unit, Carnegie Institution, Stanford, California, United States of America.
- Knight, F.H., 1921. Risk, Uncertainty, and Profit. Boston, MA: Hart, Schaffner & Marx; Houghton Mifflin Company.
- Knutson, T.R., McBride, J.L., Chan, J., Emanuel, K., Holland, G., Landsea, C., Held, I., Kossin, J.P., Srivastava, A.K., Sugi, M., 2010. Tropical cyclones and climate change. *Nature Geoscience* 3, 157–163
- Lempert, R.J., Collins, M.T., 2007. Managing the risk of uncertain thresholds responses: comparison of robust, optimum, and precautionary approaches. *Risk Analysis* 27, 1009–1026.
- Lempert, R.J., Groves, D.G., Popper, S.W., Bankes, S.C., 2006. A general, analytic method for generating robust strategies and narrative scenarios. *Management Science* 52 (4), 514–528.
- Lempert, R.J., Schlesinger, M.E., 2000. Robust strategies for abating climate change. *Climatic Change* 45 (3/4), 387–401.
- Mestre, O. and S. Hallegatte, 2008, Predictors of Tropical Cyclone Numbers and Extreme Hurricane Intensities over the North Atlantic using Generalized Additive and Linear Models, *Journal of Climate* 22(3), pp. 633–648
- Nassopoulos, H., P. Dumas, S. Hallegatte, 2012. Adaptation to an uncertain climate change: cost benefit analysis and robust decision making for dam dimensioning. *Climatic Change*, doi: 10.1007/s10584-012-0423-7.
- Nuissier, O., B. Joly, and A. J. V. Ducrocq, 2011: A statistical downscaling to identify the large-scale circulation patterns associated with heavy precipitation events over southern France. *Quart. J. Roy. Meteor. Soc.*, 137, 1812–1827.
- O'Brien, K., M. Pelling, A. Patwardhan, S. Hallegatte, A. Maskrey, T. Oki, U. Oswald-Spring, T. Wilbanks, and P.Z. Yanda, 2012: Toward a sustainable and resilient future. In: *Managing the Risks of Extreme Events and Disasters to Advance Climate Change Adaptation* [Field, C.B., V. Barros, T.F. Stocker, D. Qin, D.J. Dokken, K.L. Ebi, M.D. Mastrandrea, K.J. Mach, G.-K. Plattner, S.K. Allen, M. Tignor, and P.M. Midgley (eds.)]. A Special Report of Working Groups I and II of the Intergovernmental Panel on Climate Change (IPCC).

- Cambridge University Press, Cambridge, UK, and New York, NY, USA, pp. 437-486.
- OXERA, 2002. A Social Time Preference Rate for Use in Long-Term Discounting, A report for ODPM, DFT and DEFRA.
- Pindyck, R. S., 2002. "Optimal Timing Problems in Environmental Economics." *Journal of Economic Dynamics & Control* 26: 1667-1697.
- Portney, P. R. and Weyant, J.P., 1999. Discounting and Intergenerational Equity, *Resources for the Future*, 202pp. pp. 75.
- Ramsey, F. P., 1928. A Mathematical Theory of Saving. *Economic Journal*, 38, 543–59.
- Ranger N., A. Millner, S. Dietz, S. Fankhauser, A. Lopez and G. Ruta, 2010. Adaptation in the UK: a decision-making process, Policy Brief, Grantham Research Institute on Climate Change and the Environment and Center for Climate Change Economics and Policy.
- Redelsperger, J.L., Thorncroft, C., Diedhiou, A., Lebel, T., Parker, D.J. and J. Polcher (2006): African Monsoon Multidisciplinary Analysis (AMMA): An International Research Project and Field Campaign. Published in *BAMS*, Volume 87, Issue 12 (December 2006) , pp. 1739–1746
- Schwartz, P., 1996. *The Art of the Long View*. Double Day, New York.
- Slovic, P., Fischhoff, B., Lichtenstein, S., Roe, F.J.C., 1981. Perceived risk: psychological factors and social implications [and discussion]. *Proceedings of the Royal Society of London. A. Mathematical and Physical Sciences* 376, 17–34
- Stern, N., et al. 2006. *The Stern Review on the Economics of Climate Change*. <http://www.hm-treasury.gov.uk>
- U.K. Treasury, 2003. *Green Book, Appraisal and Evaluation in Central Government*, available on <http://greenbook.treasury.gov.uk/>
- Weitzman, M., 2001. Gamma Discounting, *American Economic Review* 91(1).
- Weitzman, M.L., 2009. On modeling and interpreting the economics of catastrophic climate change. *The Review of Economics and Statistics* 91, 1–19.